



Jetting Drain Camera

Cleans and Inspects Simultaneously.

A steering nozzle on the side of the CleanSteer camera head delivers the propulsion needed to steer through junctions (by simply twisting the cable) and hover over debris. Six additional nozzles behind the camera perform cleaning, and provide the thrust needed to reach past multiple tees and bends in lines as small as 2".

Live video appears onscreen, and can be recorded to an SD card, captured in still images, and streamed via WiFi. The portable system holds 196' of hose and is self contained, requiring only an external pump delivering 10–20 gpm at 1000–2000 psi.



productive

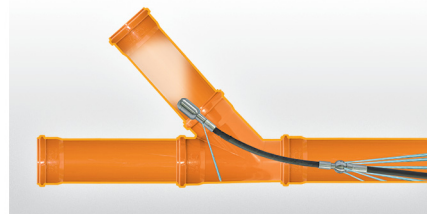
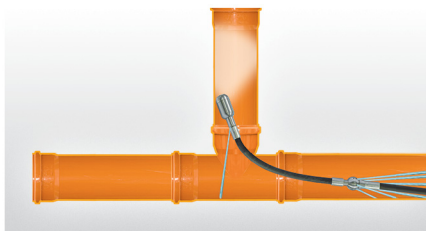
- Inspects twice as fast as a push camera (self-propelled and steerable).
- Cleans simultaneously.
- Verifies cleaning as it's withdrawn.

efficient

- Inspects from a single point (e.g. basement or main) rather than many.
- Navigates past multiple 90-degree bends.

profitable

- Removes obstructions to view underlying causes, often leading to rehab work.
- Replaces both rodder and push camera at a fraction the price.

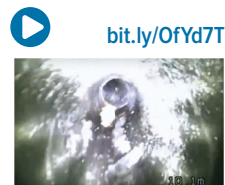


Clean and Inspect Simultaneously • Steer Through Junctions • Hover Above Debris • View, Record and Stream Video



bit.ly/1dRrWQW

Hovering in 12" pipe, then turning up a lateral.



bit.ly/0fYd7T

Maneuvering past obstructions.



bit.ly/1mFtJYZ

Navigating a complex pipe (with schematic).



bit.ly/1lsIMXg

Traversing multiple pipes with a pressure washer.

